

PE FOAM TAPE

PRODUCT DATA SHEET

4105 PREMIUM WHITE PE FOAM TAPE - SINGLE SIDED

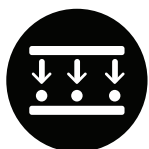
DESCRIPTION

The 4105 is made from cross linked tough PE (Polyethylene) foam and is coated one side with an aggressive long life acrylic adhesive. The outer foam surface is smooth & friction free, also food & water compatible - with FDA approval. This foam is converted, slit and packaged in New Zealand to meet customer requirements. Available in NZ in two thicknesses: 3 & 6 mm

| | |
|----------------|-----------|
| FOAM DENSITY | MEDIUM |
| ADHESION LEVEL | HIGH BOND |
| COLOUR | WHITE |



FEATURES



AIR / LIGHT / MOISTURE SEAL

When compressed the closed cell foam structure provides good strength, conformability & excellent compression recovery. Also an effective seal to block out air, vapour, dust, light & moisture.



FDA FOOD COMPLIANT

The 4106 carries a FDA Food Compliance for direct contact with food.



CHEMICAL & SOLVENT RESISTANT

Good resistance to most solvents, oils & chemicals.



NOISE & VIBRATION BARRIER

Excellent as an Anti-Noise barrier especially in clear roof applications reducing stress from wind & temperature changes.



AGE & WEATHER RESISTANCE

Very good aging, fungi & weather / UV resistance.



STRONG BOND, LONG LIFE ADHESIVE

TYPICAL APPLICATIONS

- Excellent for various sealing and closure applications in air conditioning, heater assembly, rigid ducting, wall panelling, vending machines & display cabinets.
- Used as a barrier to prevent electrolytic corrosion between different metals.
- Often used to cushion & stop vibration in manufactured machinery.
- The 4105 is both food and water compatible - FDA Approval.
- Good for gap filling especially in construction concrete formwork.
- Suitable for die cutting and the making of gasket profiles - contact NZTS for assistance.
- Used in the roofing industry to seal across battens & provide a noise stop barrier. Often called a Purlin tape - used under polycarbonate plastic roofing.
- PURLIN TAPE: Used in steel & translucent plastic roofing to provide isolation of roofing cladding materials for thermal, mechanical and noise protection.

ADVANTAGES

QUICK & EASY TO USE

No clean up mess which occurs with liquid adhesives.

ECONOMICAL

Preparation time is minimal.
Installation is faster & waste is reduced.

SLIT TO SIZE IN NZ

Roll widths are slit to required sizes in New Zealand. Fast delivery to site throughout New Zealand.

FREE TECHNICAL ADVICE

Free technical assistance, samples and advice available throughout NZ from the tape spec sales team.



PRODUCT

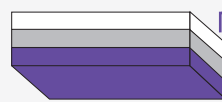
PE (Polyethylene) FOAM TAPE

Density: **MEDIUM**

Thickness: **3, 6mm**

Colour: **WHITE**

PVC NITRILE, EPDM & PE FOAM TAPE STRUCTURE



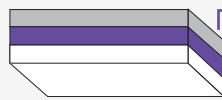
White Silicone Release Paper

Acrylic Adhesive

Foam Tape

Also available in our foam tape range

PVC FOAM TAPE STRUCTURE

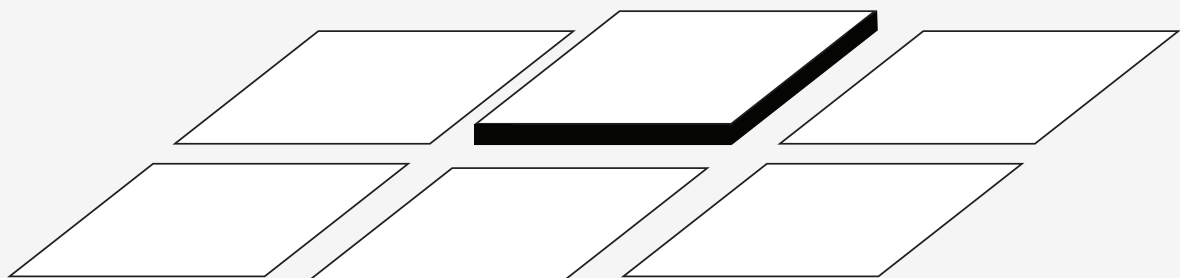


High Bond Acrylic Adhesive

Closed Cell PVC Foam Tape

White Silicone Release Paper

DIECUTTING



Able to be die and kiss cut into various shapes.

CERTIFICATIONS

**REACH:**

Complies with EU Regulations 1907/2006/EC (REACH)

**FDA:**

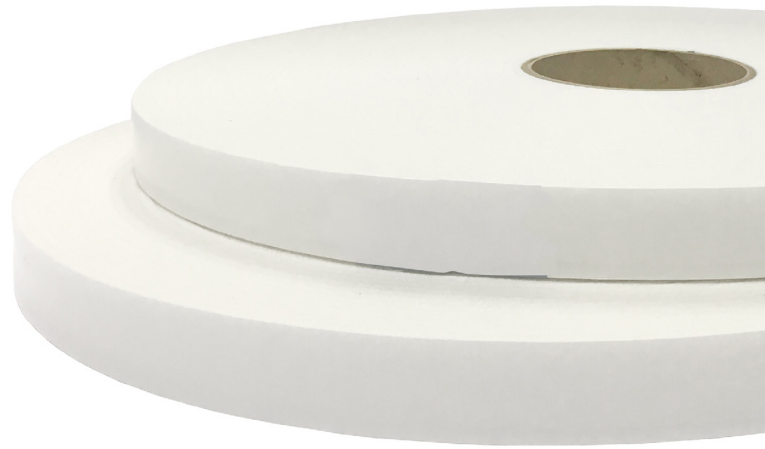
Complies with: FDA 21 CFR 177.1520, 178.3010 & 177.1210.

**ROHS**

Complies with EU regulations 2011/65/EC (ROHS)

**LOW VOC:**

Classified as a low VOC emitting material - Green Building Cert purposes.

**MADE UNDER****MADE UNDER:**

Made under; ISO9001, ISO14001 & OHSAS 18001.

PROP. 65**PROPOSITION 65:**

Complies with the State of California Safe Drinking Water & Toxic Enforcement Act.

FREE FROM**FREE FROM:**

Chlorine, Plasticisers, Formaldehyde & Asbestos.

**SAFE FOR PLASTIC**

Safe for use with plastic materials.

LBC**LIVING BUILDING CHALLENGE:**

Do not contain any substances in the Living Building Challenge Red List Version 3.1, published by the International Living Future Institute.



TECHNICAL INFORMATION

| | |
|--|---|
| Adhesive | Acrylic (High Bond & Long Life) |
| Colour | White |
| Thickness (mm) | 3, 6mm. |
| Density (kg/m ³) | 33kg |
| Tear Resistance: (JIS K6767 Kg cm ²) | 2.4 lengthwise 1.5 crosswise |
| Compression Strength:(JIS K6767 Kg cm ²) | 0.49 25% Deflection 1.07 50% Deflection 2.07 75% Deflection |
| Compression Set 70hrs after Discharge% | 25% Deflection 8.5 50% Deflection 23 |
| Water Buoyance Kg cm ³ : | 956 (30) |
| Noise Reduction db: | 21.9 (2) |
| Thermal at 273 k (0°C): | 0.030 kcal/m °C |
| Resistance to: | Fungi / Aspergillus Niger - black mould & various other common fungi types. |
| Temperature Range: | -40°C up to + 115°C for short period |
| Recommend Temp Application: | 4°C to 25°C |
| Order Codes / Thickness: | 4105 either 3 or 6mm thickness. <i>3mm thickness:</i> 1250mm x 25m log roll <i>6mm thickness:</i> 1000mm x 12m log roll |
| Packaging | Can be retail / DIY or custom labelled & clam shell packaging to requirements |

Slit to various width sizes as required.

SIMILAR PRODUCTS

- 4106 Grey PE Foam Tape

NOTE: We recommend tape product testing to assess the suitability of the selected product to the end application & conditions. For surface preparation and guidelines please refer to our website www.tapespec.co.nz Advanced Tape Application Guide.

SURFACE SUBSTRATE CONDITION & PREPARATION

The surfaces to be bonded must be dry & free from any contamination including dust, oils, & fats, oxidation, release agents & any other known contamination.

The correct choice of surface cleaner depends on the surface properties. Essentially non-greasy cleaners are recommended including isopropanol alcohol (mixed 50/50 with clean water). Cleaning cloths must be clean, grease & fat free with no loose fibers or cloth particles.

The bond strength is dependent upon the contact pressure of the adhesive to substrate. To assist this process all adhesive tapes require firm hand or roller pressure.

BONDING APPLICATION TEMPERATURE

We recommend that the product, substrate & environment should be between +15°C & 25°C. Ensure that the adhesive product & substrates are allowed time to adjust to the environment temperature before bonding.

For product storage we recommend that products are stored in their original packaging under dry conditions, ideally at room temperature but not warmer than +25°C. High relative humidity & direct sunlight must be avoided at all costs.

For more detailed handling instructions please refer to our comprehensive application guide.

PRODUCT USE

The information in this guide is based upon our knowledge & practical experience. This data is intended only as a source of information given without guarantee & does not constitute a warranty.

Due to the wide variety of possible uses & applications, customers should independently determine the suitability of these products for their specific purpose, prior to use. Trial samples are provided free of charge & without obligation.

For detailed surface preparation & application information please refer to our detailed Surface Condition & Preparation Guide.



Tapespec - Distributed by Acme

www.acme.co.nz — PH: 0800 226 369



NEW ZEALAND TAPE SPECIALISTS

www.tapespec.co.nz